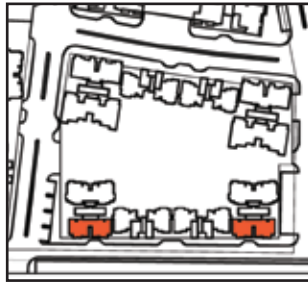


Trucia - Unit Plan



KEY PLAN



2 Bedrooms + 2 Bathrooms + Living & Dining + Study + Kitchen | Saleable Area 1548.63 sq.ft. (143.87 sq.m.)

Note: 1 Sq. Mtr. = 10.764 Sq. Ft.

Disclaimer: All specifications / Areas / Plans / Layout are indicative and are subject to change by the Architect / Developer in the best interest of the development as deemed fit.

Trucia - Unit Plan



KEY PLAN

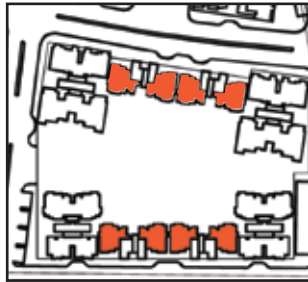


3 Bedrooms + 3 Bathrooms + Living & Dining + Study + Kitchen | Saleable Area 2066.03 sq.ft. (191.94 sq.m.)

Note: 1 Sq. Mtr. = 10.764 Sq. Ft.

Disclaimer: All specifications / Areas / Plans / Layout are indicative and are subject to change by the Architect / Developer in the best interest of the development as deemed fit.

Trucia - Unit Plan



KEY PLAN



3 Bedrooms + 3 Bathrooms + Living & Dining + Study + Kitchen | Saleable Area 2100.32 sq.ft. (195.13 sq.m.)

Note: 1 Sq. Mtr. = 10.764 Sq. Ft.

Disclaimer: All specifications / Areas / Plans / Layout are indicative and are subject to change by the Architect / Developer in the best interest of the development as deemed fit.